

Skylight Blind

Fitting, operation and maintenance instructions

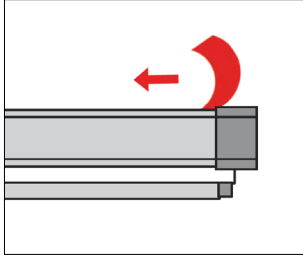
Warning! The operating instructions must be read before operating the blind.

Fitting Instructions for Skyligh Roller Blinds

This procedure can be completed by non-professionals.

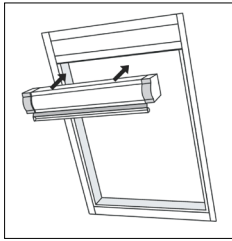
Step 1 - Prepare the blind for installation

Remove the blind from its packaging and carefully peel off the tape cover strip from the top of the blind's box.



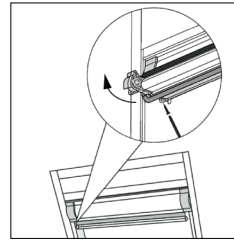
Step 2 - Position and attach the blind

Insert the blind into the window frame and align the top box so it sits flush with the top edge of the frame. Once correctly positioned, press firmly to stick the blind's box securely onto the frame.



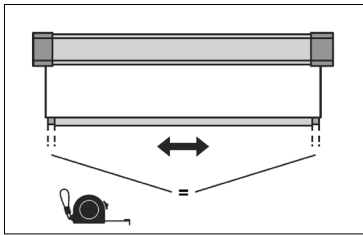
Step 3 - Secure the top box

Lift the blind's bottom bar to reveal the attachment slot underneath the top box. Using the supplied screws, fix the top box securely in place to ensure the blind is firmly attached to the window frame.



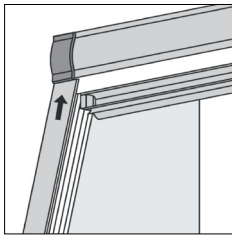
Step 4 - Align the bottom bar

Once the top box is securely fixed into the window frame, check that the bottom bar sits neatly in the middle of the fabric. This ensures the blind operates smoothly and the fabric is evenly aligned within the side channels.



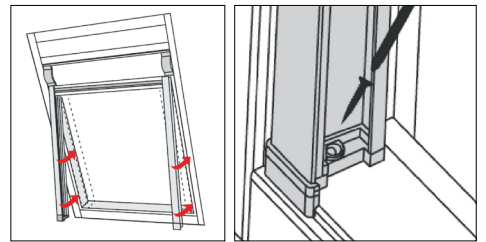
Step 5 - Install the side channels

Slot the fabric into the groove at the top of each side channel. Then, align the top of the side channel with the slot underneath the top box end cap and carefully insert it, ensuring a secure fit.



Step 6 - Secure the side channels

Once the side channels are slotted into the frame, fix them in place by fastening the supplied screws into the attachment slots on the bottom end caps of each side channel.



Operation & Maintenance

Warning! The operating instructions must be read before operating the blind.

Operating instructions for Skylight Blinds

To operate the blind, release the brake by tilting the bottom bar handle towards the window, then pull the bottom bar handle downward to close the blind or push it upward to open it. To lock the blind into position release your hands from the bottom bar handle.

Blinds installed at height are operated by an operating rod. Using the operating rod, tilt the bottom bar handle towards the window to unlock the blind, then pull the handle downward with an operating rod to close the blind or push it upward to open it. To lock the blind into position release the operating rod from the bottom bar handle.

Maintenance Instructions

This product is designed to be maintenance-free; however, we recommend carrying out regular visual inspections to ensure that no components are damaged, as this could lead to operating difficulties or pose a safety risk. If any maintenance is required, it should be completed promptly by a reputable blind company.